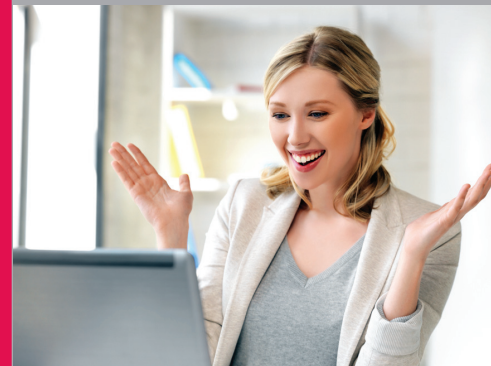


Simple Life.

Supplemental Insurance enrollment...
in a snap.



Administered by:

NATIONAL  **INSURANCE**
SERVICES

Corporate Headquarters

250 South Executive Drive, Suite 300, Brookfield, WI 53005

Offices Nationwide

800.627.3660

SimpleLife.

Supplemental Insurance enrollment...in a snap.

You already know that adding a new employee benefit is a great employee retention and recruitment tool, but enrollments can be an administrative hassle. Introducing SimpleLife. It's straightforward and easy to implement. No employee meetings. No extra paperwork. No medical underwriting.

SimpleLife Plan Highlights

- NIS provides a one-time open enrollment kick-off, thereafter an annual opportunity to increase the benefit by \$10,000*.
- New hires enroll within 30 days of hire.
- No medical questions required for initial participants and new hires.
- 100% electronic enrollment (paper forms available).

SimpleLife Employee Communication

We handle it all – from start to finish. 100% electronic enrollment means no paperwork for you – enrollment forms go from your employees' computer straight to ours. And no medical questions for them equals no questions for you such as, "When will I be approved?" New employee forms are provided and once signed up, employees can add coverage every year with a push of a button. All you need to do is set up your payroll deductions.

- Employee survey to determine interest level
- New hire and annual open enrollment forms
- Personalized website for your forms and certificates
- Optional materials available: posters, videos, table tents and brochures

| | | Number of Employees | | |
|------------------|-----------|---------------------|---------|------|
| | | 50-99 | 100-499 | 500+ |
| Coverage Options | \$10,000 | ✓ | ✓ | ✓ |
| | \$50,000 | ✓ | ✓ | ✓ |
| | \$100,000 | ✓ | ✓ | ✓ |
| | \$150,000 | - | ✓ | ✓ |
| | \$200,000 | - | - | ✓ |

Coverage maximums apply. Coverage cannot exceed 5 times annual salary. Basic Life Insurance combined with Supplemental Life Insurance cannot exceed 7 times annual salary.

**If 15% participation is not met, the plan is withdrawn.*

3 Steps to Get Started with SimpleLife:



1

Sign Up

All we need is 1 week lead time to get the ball rolling. Ask your NIS Market Development Rep how you can sign up today!



2

Submit

Provide us your census and we'll handle all employee communications.



3

Sit Back and Relax

From electronic enrollment to answering employee questions, we've got you covered.